



OMNIA SURGICAL DRAPES

OMNIA OFFERS A COMPLETE, VERSATILE RANGE OF DRAPES, SUITABLE FOR DIFFERENT DENTAL APPLICATIONS AND TREATMENTS

Omnia surgical drapes are designed for the protection of the operation field and the patient in order to meet the different needs.

They are waterproof, with fluid control systems and self-adhesive areas to allow safe and accurate fixing and enhancing the range of sterile fields.

SURGICAL SURFACE DRAPES

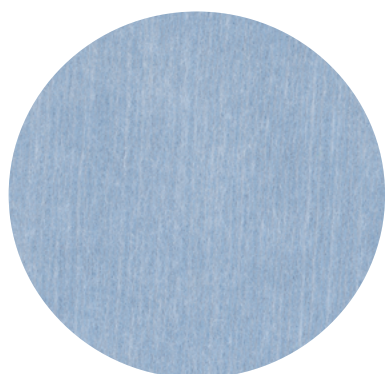
- **Absorbent NWF + Liquid proof PE** (polyethylene)
- **NWF + Liquid proof PE** (polyethylene)

SURGICAL PATIENT DRAPES

- **Sontara®**
- **Absorbent NWF + Liquid proof PE** (polyethylene)
- **NWF + Liquid proof PE** (polyethylene)

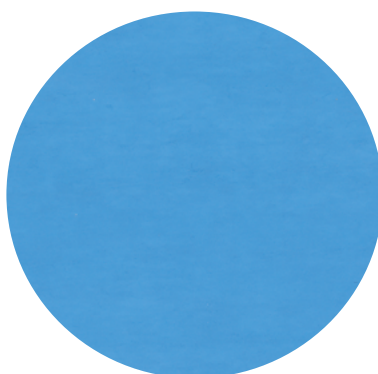


SURGICAL DRAPE FABRIC OPTIONS:



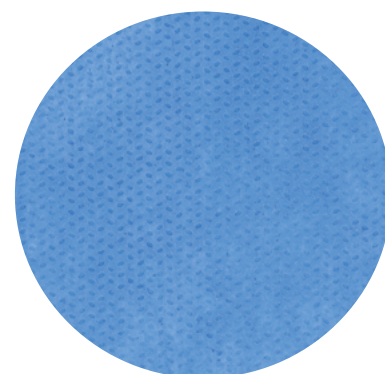
Sontara®

Fluid-repellent, soft, drapable and highly breathable for complete protection and comfort.



Absorbent NWF + Liquid proof PE (polyethylene)

2-layers: absorbent and liquid proof layer, ensuring quick absorption of body fluids and complete barrier to liquids and micro-organisms.



NWF + Liquid proof PE (polyethylene)

Fluid repellent to guarantee a high barrier effect.

SURFACE DRAPES

STANDARD SURGICAL DRAPES

Surgical surface drapes have been designed for the protection of the operation field. Available in various sizes and materials to meet your specific needs.



Sontara®



Absorbent NWF + Liquid proof PE (polyethylene)



NWF + Liquid proof PE (polyethylene)

CODE	DETAILS	MATERIAL	COLOR	QTY
12.T1750.00	Fluid-repellent drape 67x75 cm	Sontara®	Light blue	25
12.T1751.00	Fluid-repellent drape 75x100 cm	Sontara®	Light blue	40
12.T1780.00	Fluid-repellent drape 100x133 cm	Sontara®	Light blue	25
12.T1781.00	Fluid-repellent drape 133x200 cm	Sontara®	Light blue	25
12.T1387.00	Absorbent / liquid proof drape 50x50 cm	Absorbent NWF + Liquid proof PE	Light blue	125
12.T1386.00	Absorbent / liquid proof drape 50x75 cm	Absorbent NWF + Liquid proof PE	Light blue	100
12.T1354.00	Absorbent / liquid proof drape 75x90 cm	Absorbent NWF + Liquid proof PE	Light blue	50
12.T1355.00	Absorbent / liquid proof drape 100x150 cm	Absorbent NWF + Liquid proof PE	Light blue	25
12.T1357.00	Absorbent / liquid proof drape 150x200 cm	Absorbent NWF + Liquid proof PE	Light blue	25
12.T4387.00	Drape 50 x 50 cm fluid repellent	NWF + Liquid proof PE	Light blue	150
12.T4386.00	Drape 50 x 75 cm fluid repellent	NWF + Liquid proof PE	Light blue	100
12.T4354.00	Drape 75 x 90 cm fluid repellent	NWF + Liquid proof PE	Light blue	50
12.T4355.00	Drape 100 x 150 cm fluid repellent	NWF + Liquid proof PE	Light blue	25

COVERS FOR TROLLEYS AND MAYO TABLES

The Mayo table cover made of PVC is ideal to cover either the Mayo table or the quiver. The main cover is ideal instead to cover instrument tables, but it may also be used as wrapping cover for customized procedure kits. Covers are folded so that non-sterile staff may also handle them, and they have a middle layer made of absorbent non-woven fabric.



CODE	DETAILS	MATERIAL	COLOR	QTY
12.A1010.00	Mayo table cover 80x120 cm	Absorbent NWF + Liquid proof PE	Blue	25
22.A1028.00	Liquid proof main cover for instrument table 145x160 cm	Absorbent NWF + Liquid proof PE	Blue	30
12.A1006.00	Liquid proof main cover for instrument table 160x190 cm	Absorbent NWF + Liquid proof PE	Blue	25

SURGICAL DRAPES WITH ADHESIVE SIDE

The practical self-adhesive 5 cm-high, medical grade strip, applied on the short side of the drape, is used to securely fix the drape to support surfaces, so as to avoid any shifting or accidental contaminations. The protective film of the self-adhesive strip may also be removed only in part thanks to pre-cut areas.

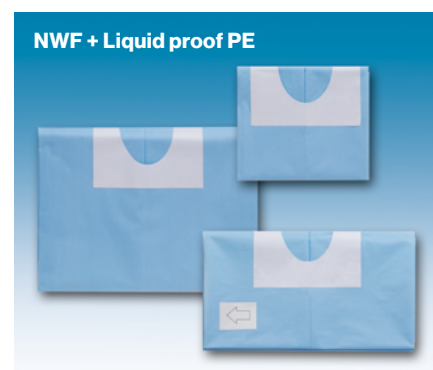


CODE	DETAILS	MATERIAL	COLOR	QTY
12.T1758.00	Fluid-repellent drape with self-adhesive side 67 x75 cm	Sontara®	Light blue	25
12.T1791.00	Fluid-repellent drape with self-adhesive side 133 x200 cm	Sontara®	Light blue	25
12.T2368.00	Absorbent / liquid proof drape with self-adhesive side 50 x75 cm	Absorbent NWF + Liquid proof PE	Blue	75
12.T1370.00	Absorbent / liquid proof drape with self-adhesive side 75 x90 cm	Absorbent NWF + Liquid proof PE	Blue	50
12.T1371.00	Absorbent / liquid proof drape with self-adhesive side 100 x150 cm	Absorbent NWF + Liquid proof PE	Blue	25
20.00010.00	Round waterproof 22 cm ø headrest cover with elastic band	NWF + Liquid proof PE	Light blue	200
20.00105.00	Universal seat and back covers	NWF + Liquid proof PE	Light blue	15

PATIENT DRAPES

SURGICAL DRAPES WITH ADHESIVE HOLE

The special self-adhesive circular hole that is cut in the middle of the drape creates an effective sterile barrier with no need for other systems. These drapes are suitable for implantology and bone distraction operations, as well as for autologous bone harvesting from extra-oral donor sites. The protective film of the self-adhesive strip is divided into pre-cut parts so as to make its application easier.



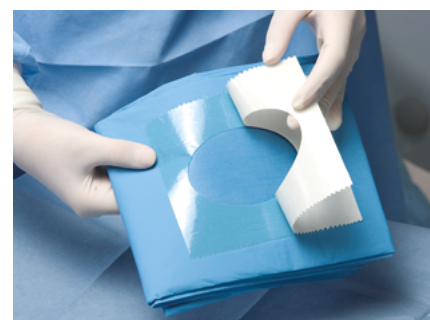
CODE	DETAILS	MATERIAL	COLOR	QTY
12.T1754.00	Fluid-repellent fenestrated (hole 6x9 cm) drape 67x75 cm	Sontara®	Light blue	50
12.T1755.00	Fluid-repellent fenestrated (hole 6x9 cm) drape 75x100 cm	Sontara®	Light blue	25
12.T1359.00	Absorbent /liquid proof fenestrated (hole 6x9 cm) drape 50x50 cm	Absorbent NWF + Liquid proof PE	Light blue	100
12.T2360.00	Absorbent / liquid proof fenestrated (hole 6x9 cm) drape 50x75 cm	Absorbent NWF + Liquid proof PE	Light blue	75
12.T1362.00	Absorbent / liquid proof fenestrated (hole 6x9 cm) drape 75x90 cm	Absorbent NWF + Liquid proof PE	Light blue	50
12.T4360.00	Drape 50x75 cm fluid repellent with adhesive center hole 6x9 cm	NWF + Liquid proof PE	Light blue	75
12.T4362.00	Drape 75x90 cm fluid repellent with adhesive center hole 6x9 cm	NWF + Liquid proof PE	Light blue	50
12.T4332.00	Drape 100x150 cm fluid repellent with adhesive offcenter hole 6x9 cm	NWF + Liquid proof PE	Light blue	25

SURGICAL DRAPES WITH OFF-CENTERED ADHESIVE HOLE

The self-adhesive off-centre opening creates an effective sterile barrier and allows optimizing the drape dimensions.

These drapes are suitable for implantology and bone distraction operations, as well as for autologous bone harvesting from extra-oral donor sites.

The protective film of the self-adhesive strip is divided into pre-cut parts so as to make its application easier.



CODE	DETAILS	MATERIAL	COLOR	QTY
12.T1721.00	Fluid-repellent drape 100x150 cm with self-adhesive off-centre opening 6x9 cm	Sontara®	Light blue	25
12.T1771.00	Fluid-repellent drape 133x200 cm with self-adhesive off-centre opening 6x9 cm and loop	Sontara®	Light blue	10
12.T5332.00	Absorbent / liquid proof drape 100x150 cm with self-adhesive off-centre opening 6x9 cm	Absorbent NWF + Liquid proof PE	Light blue	25

MONO DRAPES FOR ADVANCED ORAL SURGERY

Wide-dimension drapes, whose characteristics make them suitable for advanced surgery operations: the Velcro-style line holder is used to secure into position surgical instruments and aspirators preventing accidental falls to the floor. Single drapes are made of **Sontara®**, so as to ensure the greatest safety and comfort to the patient.



This mono drape has a layer of ultra-absorbent non-woven fabric in the area of the **U**-shaped cut, so as to guarantee a quick and safe absorption of fluids during oral surgery or maxillofacial operations. The ultra-absorbent layer extends all over the upper area of the drape, thus enabling to safely place instruments and equipment on the chest of the patient.



This mono drape has a triangular opening, the surrounding adhesive strip enables to fix the drape onto the chin of the patient. An adjustable aluminium band that runs along the upper side of the triangular opening allows its safe positioning on the nose of the patient. To protect the patient's eyes from any splash or accidental injuries, the drape has a protection window made of a transparent material that also allows an easy and immediate communication between the patient and the operator, thus avoiding unpleasant panic situations.

CODE	DETAILS	MATERIAL	COLOR	QTY
22.T1782.00	Fluid-repellent single drape 133x200 cm with adhesive U -shaped cut 6.50x50 cm, ultra-absorbent reinforcement and Velcro-style line holder	Sontara®	Light blue	5
22.T1783.00	Fluid-repellent single drape 133x200 cm with triangular adhesive opening 11x10 cm, no-panic opening and Velcro-style line holder	Sontara®	Light blue	5

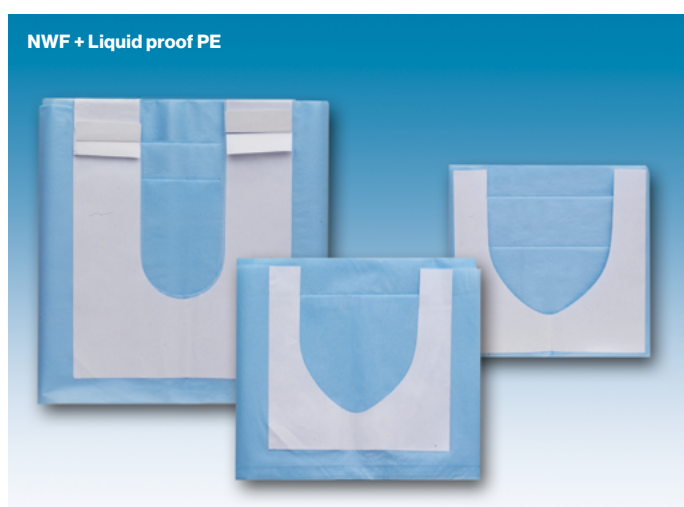
Bold numbers indicate the adhesive side
PE: polyethylene

SURGICAL DRAPES WITH ADHESIVE U-SHAPED

The drapes for patients, with self-adhesive **U**-shaped cut, are made of different fabrics and dimensions in order to be able to meet the different needs of the medical staff using them.

The range includes drapes in **NWF + Liquid proof PE (polyethylene)**, **2-layers non-woven fabric** and **Sontara®**.

The special U-shaped cut on the short side of the drape allows its easy positioning close to the lower lip or neck of the patient, so as to create an effective sterile barrier. Ease of use and quick drapeability help avoiding the risk of contamination and waste of time. The protective film of the self-adhesive strip is divided into pre-cut parts so as to make its application easier.



CODE	DETAILS	MATERIAL	COLOR	QTY
12.T1792.00	Fluid-repellent drape 133x200 cm with adhesive U -shaped cut 6.5x50 cm and loop	Sontara®	Light blue	10
12.T1253.00	Absorbent / liquid proof drape 50x75 cm with adhesive U -shaped cut 11x9 cm	Absorbent NWF + Liquid proof PE	Light blue	50
12.T1254.00	Absorbent / liquid proof drape 75x90 cm with adhesive U -shaped cut 11x9 cm	Absorbent NWF + Liquid proof PE	Light blue	25
12.T1264.00	Absorbent / liquid proof drape 100x150 cm with adhesive U -shaped cut 6.5x30 cm	Absorbent NWF + Liquid proof PE	Light blue	25
12.T1265.00	Absorbent / liquid proof drape 100x150 cm with U -shaped cut 6.5x30 cm, without adhesive strip	Absorbent NWF + Liquid proof PE	Light blue	25
12.T1266.00	Absorbent / liquid proof drape 150x200 cm with adhesive U -shaped cut 6.5x50 cm	Absorbent NWF + Liquid proof PE	Light blue	25
12.T4253.00	Drape 50x75 cm fluid repellent with adhesive U-shape 11x9 cm	NWF + Liquid proof PE	Light blue	50
12.T4254.00	Drape 75x90 cm fluid repellent with adhesive U-shape 11x9 cm	NWF + Liquid proof PE	Light blue	50
12.T4264.00	Drape 100x150 cm fluid repellent with adhesive U-shape 6.5x30 cm	NWF + Liquid proof PE	Light blue	25

For more information on Hu-Friedy products or to place an order, call at 00800 48 37 43 39 or visit [HuFriedyGroup.eu](https://www.HuFriedyGroup.eu)

For more information on Crosstex products, call +39 05 24 52 74 53 or visit [Crosstex.com](https://www.Crosstex.com)

For more information on Omnia products or to place an order, call +39 05 24 52 74 53 or visit [OmniaSpa.eu](https://www.OmniaSpa.eu)

Hu-Friedy Mfg. Co., LLC • European Headquarters • Lyoner Str. 9 • 60528 Frankfurt am Main, Germany • [HuFriedyGroup.eu](https://www.HuFriedyGroup.eu)

As some of the products included in this catalogue might not be available in some countries, we invite you to verify the availability of the product with your local authorised dealer or to contact our customer care at the free phone number 00800 48 37 43 39. Available while stocks last. Sontara® is a trademark of Sontara® South Asia. All other company and product names are trademarks of Hu-Friedy Mfg. Co. LLC, its affiliates or related companies, unless otherwise noted.

©2021 Hu-Friedy Mfg. Co., LLC All rights reserved. 90.L0399.EN/1221